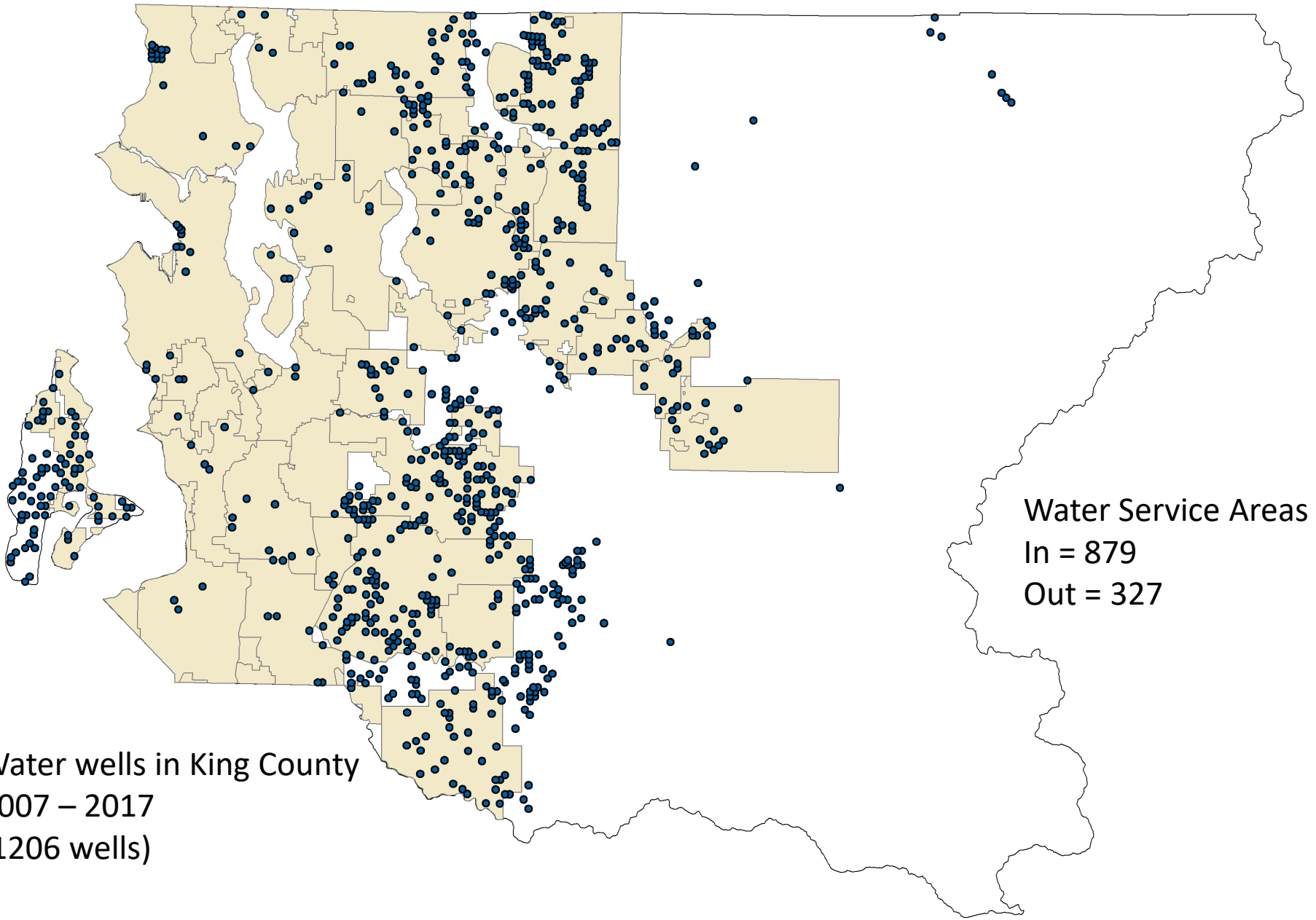
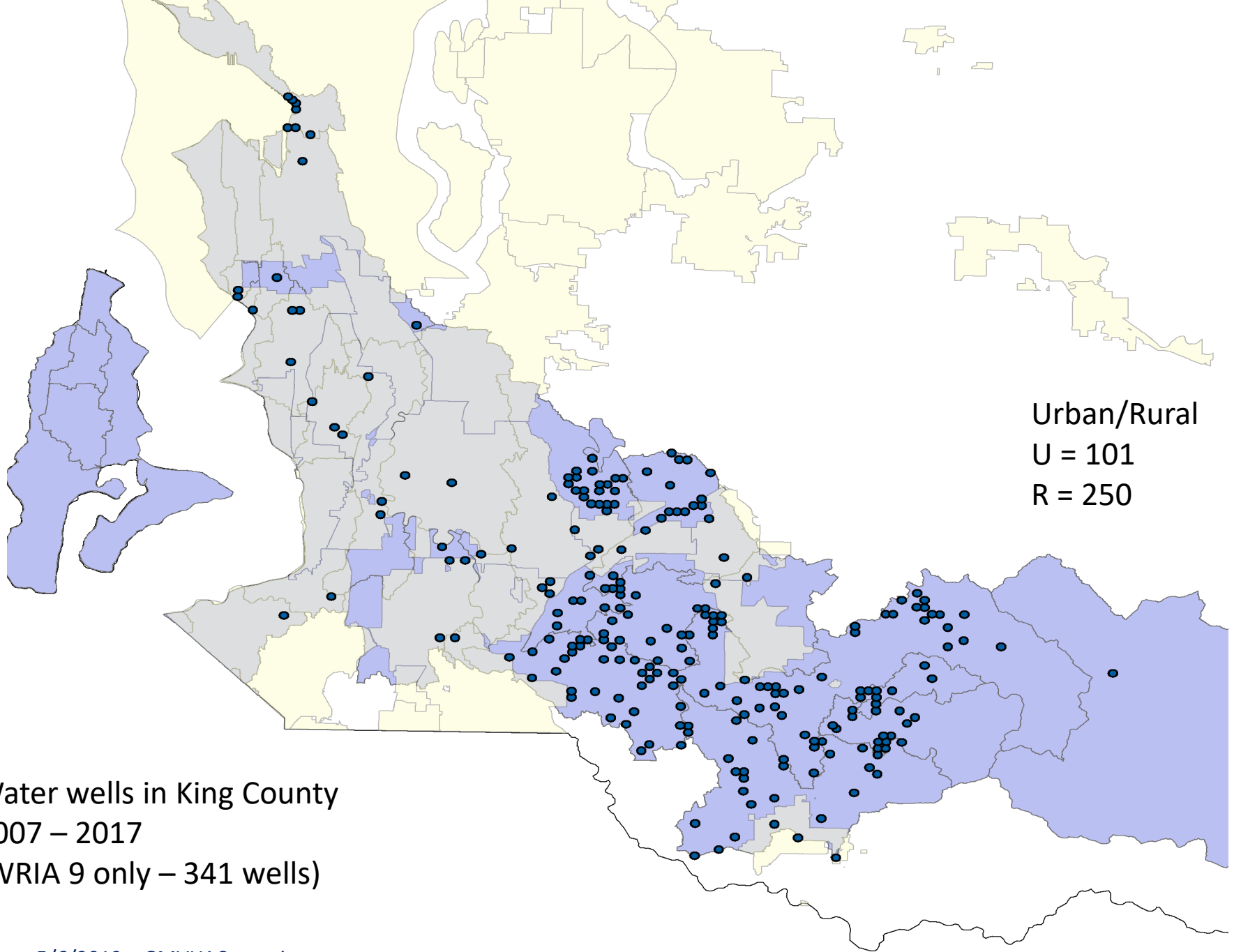


Water wells in King County
2007 – 2017
(1206 wells)



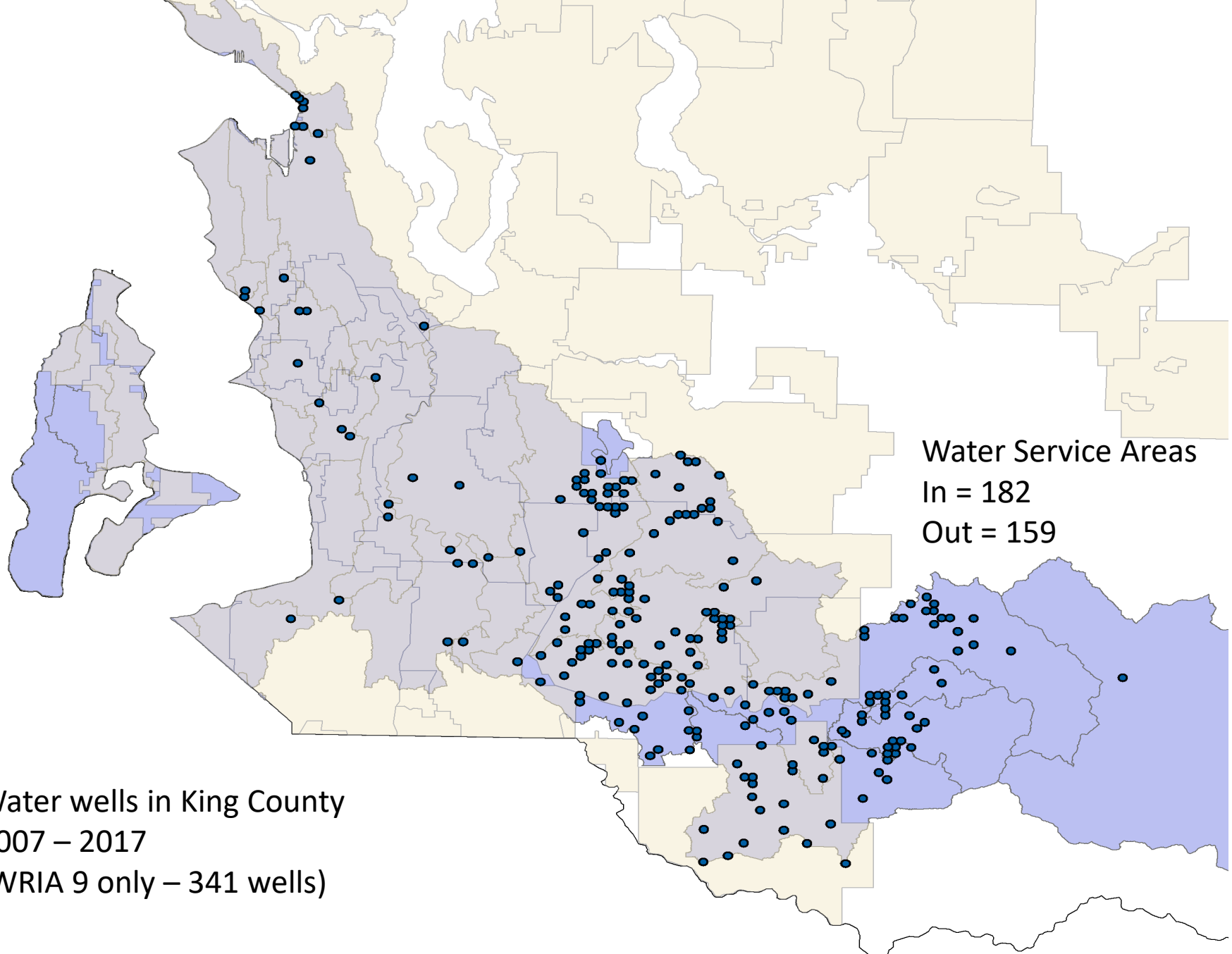
Water Service Areas
In = 879
Out = 327

Water wells in King County
2007 – 2017
(1206 wells)



Urban/Rural
U = 101
R = 250

Water wells in King County
2007 – 2017
(WRIA 9 only – 341 wells)



Water Service Areas
In = 182
Out = 159

Water wells in King County
2007 – 2017
(WRIA 9 only – 341 wells)