

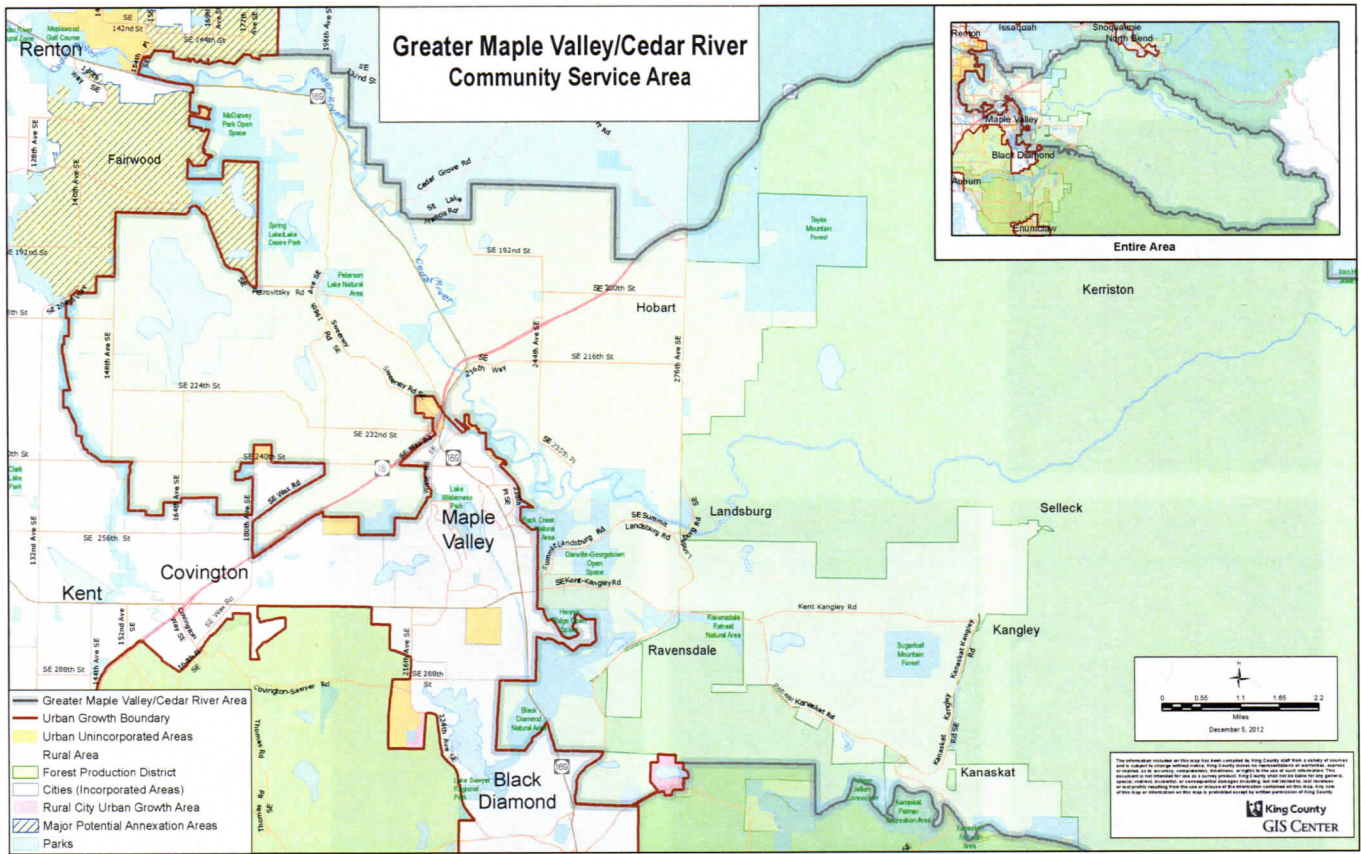
# 2019 King County Work Plans

Greater Maple Valley-Cedar River  
Community Service Area



**King County**  
Local Services

<https://kingcounty.gov/local-services>  
[AskLocalServices@kingcounty.gov](mailto:AskLocalServices@kingcounty.gov)



**Greater Maple Valley/Cedar River Area** lies east of the cities of Renton and Kent and north of Covington, Maple Valley, and Black Diamond, and extends east to the border with Kittitas County. The western part has low rolling hills with several lakes, while the eastern part moves into the Cascade Range, including parts of the Forest Production District and Mount Baker-Snoqualmie National Forest.

## CONTENTS

4	Assessor's Office
4	Community & Human Services
6	King County Elections
7	Executive Office
7	Executive Services
8	Local Services
9	Metro
10	Natural Resources & Parks
20	Public Health, Seattle & King County
21	Sheriff's Office



**W**elcome to the King County work plan for the Greater Maple Valley/Cedar River Community Service Area of King County.

This document includes current work plans, initiatives, ongoing projects, and completed projects of King County departments and separately elected offices in your community.

We include contact information for the projects in case you would like further details on specific projects or initiatives.

King County's Department of Local Services brings representatives of King County government together with residents of unincorporated King County. In addition to the following work program, the Local Services team hosts a series of town hall meetings throughout unincorporated King County and offers small grants to community organizations that serve the residents of unincorporated King County. For more information, visit our website: <https://kingcounty.gov/depts/local-services/community-service-areas.aspx>

You can find more information about King County on the county's website: <https://kingcounty.gov>

For specific information about initiatives lead by the King County Executive, including becoming the nation's best-run government, confronting climate change in King County, building equity and opportunity for all, and strengthening our regional transit mobility, visit the Executive's website: <https://kingcounty.gov/elected/executive/constantine.aspx>

Your community is represented on the King County Council by Councilmember Reagan Dunn, District 9. You can reach him via the King County Council website (<https://kingcounty.gov/council.aspx>) or by phone (206-477-1009) or email ([reagan.dunn@kingcounty.gov](mailto:reagan.dunn@kingcounty.gov)).

Thank you for your interest in the many projects and initiatives underway in your community.

John Taylor  
Director, Department of Local Services  
[asklocalservices@kingcounty.gov](mailto:asklocalservices@kingcounty.gov)  
206-477-3800

---

## ASSESSOR'S OFFICE

### Property Assessments

#### 2019 Property Valuation and Tax Update

- Provide information on how eligibility for the property tax relief programs senior citizens, individuals with disabilities, and veterans have expanded this year due to legislative action, and help qualified property owners take advantage of those programs.
- Provide proactive workshops on property tax relief programs, with an emphasis on senior citizen property tax exemptions. Assessor's staff will be available at these workshops to help community members understand the requirements for property tax relief and to register them for the programs if they qualify.
- Provide detailed valuation and property tax updates for property owners and residents in the unincorporated community service areas.
- Provide a Taxpayer Transparency Tool on our website so residents in the unincorporated community service areas will have information on how proposed ballot measures will affect their property taxes.
- Provide physical inspection schedules for all unincorporated community service area neighborhoods and increase public education about the Washington State revenue system at unincorporated community service area community meetings.

**Assessor.info@kingcounty.gov | 206-296-7300**

---

## COMMUNITY & HUMAN SERVICES

The Department of Community and Human Services provides a wide range of programs and services to help people improve their health and well-being and strengthen local communities.

Mission: Provide equitable opportunities for people to be healthy, happy, self-reliant and connected to community.

### ONGOING SERVICES

#### Adult Services Division

**Older Adults Program:** Funds senior centers nearest to, and serving residents of, the unincorporated areas with services like exercise, nutrition, job coaching, health care access and social activities to eliminate isolation. Funding from the Veterans, Seniors and Human Services Levy provided small grants to senior centers across King County in 2018 to fund upgrades like improved disability accessibility, new computer systems, physical repairs, training, and technical assistance. Funding in 2019 will establish senior "hubs" for services for older adults and their caregivers at multiple locations in King County.

**King County Veterans Program:** Funds shelter, housing, emergency financial assistance, employment training and coaching, counseling, family services, and more for veterans, military personnel, and their families. Two locations: Seattle and Tukwila. Contact: King County Veterans Information and Assistance Call Center, 877-904-8387 or 2-1-1 or 206-477-8282 (Seattle) or 206-477-7022 (Tukwila). <https://kingcounty.gov/veterans.aspx>

**Vulnerable Populations Program:** Civil Legal Aid: Provides legal assistance to help people with issues relating to domestic violence, sexual assault, and housing (including eviction prevention), aid for refugees or immigrants, and help accessing benefits. Domestic Violence Services: Funds services and service providers throughout King County. Sexual Assault Services: For information call 2-1-1 or the 24-hour Sexual Assault Resource line: 1-888-998-6423. Treatment is available for all county residents at Harborview Medical Center for Sexual Assault and Traumatic Stress in Seattle (206-744-1600) or King County Sexual Assault Resource Center in Renton (425-226-5062). Employment & Education Resources-Adult Programs: Employment and training to help low-income and unemployed workers and people who are homeless and seeking employment to restabilize their lives (Career Connections), and adults age 18 and

---

## **Community & Human Services cont'd.**

older with previous involvement in the criminal justice system who are experiencing barriers to employment (King County Jobs Initiative). Contact Yanika (Nikka) Lemons (206-263-9064).

### **Behavioral Health & Recovery Division**

**Behavioral Health Services:** Funds mental health and substance use disorder prevention and treatment services, primarily through contracts with local community-based treatment provider agencies located throughout the region. Services include 24-hour crisis outreach, investigation for involuntary commitment and inpatient and outpatient treatment services. Contacts: 1-866-4CRISIS (24-hour helpline for suicide prevention), Behavioral health and Recovery Client Services lines (206-263-8997 or 1-800-790-8049) for help with assessment and referral. Website: <https://kingcounty.gov/depts/community-human-services/mental-health-substance-abuse.aspx>

### **Children, Youth & Young Adults Division**

Provides and funds promotion, prevention, and early intervention services for children and youths aged 5-24; youth/young adult education and employment services; and a range of justice system alternatives for youths with prior involvement in the juvenile justice system. This includes YouthSource, Youth and Family Services Program, and other programs that serve to re-engage youths who have dropped out of school to complete their education and build a career path for a stable financial future. Other programs seek to connect children and youths to programs and services (e.g., Screening, Brief Intervention and Referral to Treatment) that seek to intervene at points in childhood and adolescence where developmental, societal or environmental issues or problems first occur with the goal of quick, targeted, and early intervention and positive development. Contacts: <https://www.kingcounty.gov/beststarts>  
Contact: Sheila Capestany (206-263-7823 or [sheila.apestany@kingcounty.gov](mailto:sheila.apestany@kingcounty.gov))

### **Developmental Disabilities and Early Childhood Supports Division**

Supports persons of all ages with developmental disabilities and their families to lead full, integrated and productive lives, services for infants and toddlers with developmental delays, employment support for youths (School to Work) and adults, Community Access services for people with disabilities, and community information, outreach, and referral for people with disabilities and their families. With funding from Best Starts for Kids, the division is also providing Universal Developmental Screening for children from birth to age 5 and assessment and referrals for infant mental health to identify any developmental issues as early as possible.

Contact: Magan Cromar (206-263-9105 or [magan.cromar@kingcounty.gov](mailto:magan.cromar@kingcounty.gov)) <https://kingcounty.gov/ddd>

### **Housing, Homelessness and Community Development Division**

<https://kingcounty.gov/depts/community-human-services/housing.aspx>

**Housing Capital Projects:** Provides financing to nonprofit organizations or housing authorities to create affordable housing for low-income and vulnerable populations throughout King County.

Contact: Jackie Moynahan (206-477-7524 or [jackie.moynahan@kingcounty.gov](mailto:jackie.moynahan@kingcounty.gov))

**Homelessness:** Funds homeless shelters throughout the region, homeless prevention and diversion programs, rapid re-housing programs, and other emergency assistance.

Contact: Kate Speltz (206-263-9084 or [kate.speltz@kingcounty.gov](mailto:kate.speltz@kingcounty.gov))

**Coordinated Entry for All:** Individual assessments and assistance in linking to shelter, support services, and housing. Contact: (206-328-5796 or [cea@kingcounty.gov](mailto:cea@kingcounty.gov)) <https://kingcounty.gov/cea>

**Housing Repair Program:** Provides low-to-moderate income owner-occupied residences with repairs (e.g., plumbing, electrical, roofs), weatherization, and disability accommodations (e.g., walk in showers, wheelchair ramps, grab bars). Program objective is to help lower-income families maintain their housing and help seniors and veterans age safely in place to prevent homelessness. Contact: Clark Fulmer (206-263-9087 or [clark.fulmer@kingcounty.gov](mailto:clark.fulmer@kingcounty.gov)) <https://kingcounty.gov/HousingRepair>

**Community Development:** Capital project funding serves to revitalize neighborhoods (parks, playgrounds, sidewalks) and improve living conditions for low to-moderate income residents and communities. Contact: (206-263-9105 or <http://www.kingcounty.gov/cdbg>)

### **ANOTHER PROJECT OF NOTE**

**Communities of Opportunity:** A network of residents, communities, decision-makers, and funders who believe every community can be healthy and thriving—and that equity and racial justice are both

---

**Community & Human Services cont'd.**

necessary and achievable. Supported by an innovative public-private partnership between King County (through Best Starts for Kids) and the Seattle Foundation to improve the health and well-being of communities across King County. The program works to achieve more equitable community conditions through community partnerships in geographic and cultural communities, systems and policy change, and shared learning. It coordinates opportunities for learning, capacity building, and technical assistance available to a wide range of community organizations. Investments are bringing partnerships together in White Center, SeaTac/Tukwila, Kent, rural Snoqualmie Valley, Seattle's Rainier Valley and Central District, within Vashon's Latinx community, the Seattle urban Native community, and the LGBTQ community, to support and test community-driven solutions. In addition, a diverse group of more than 50 organizations across the county received grants to engage in systems/policy work that influences health, social, economic and racial equity.

Contact: Andrea Akita (206-477-4203 or [andrea.akita@kingcounty.gov](mailto:andrea.akita@kingcounty.gov)). <https://kingcounty.gov/COO>

---

**KING COUNTY ELECTIONS**

King County has nearly 1.3 million registered voters. It is the largest county in the country to vote entirely by mail and is home to one-third of Washington State's voters. King County Elections conducts accurate, secure and accessible elections, providing an important opportunity for county voters to participate in their government.

Key priorities for the department include partnering with organizations like the Department of Homeland Security to ensure election security, removing barriers to voting by adding more ballot drop boxes and providing prepaid postage, and ensuring high-quality customer service.

All ballots are processed on the second floor of the Department's Renton headquarters using field-leading technology and security practices. The facility is open to the public and visitors are welcome to observe any time ballots are being processed.

King County produces all voting materials in English, Chinese, Korean, Spanish, and Vietnamese. The county also employs a full-time translation staff to assist voters.

**Voter Registration:** available online at [kingcounty.gov/elections](http://kingcounty.gov/elections) as well as in-person at:

King County Elections Headquarters 919 SW Grady Way Renton, WA 98057	Elections Annex King County Administration Building 500 4th Avenue, Room 440 Seattle, WA 98104
--	--

Contact: 206-296-VOTE (8683) or [elections@kingcounty.gov](mailto:elections@kingcounty.gov)

**Drop Box Locations:**

**Hobart Food Market** - 20250 276th Avenue SE, Maple Valley

**Covington Library** - 27100 164th Avenue SE, Covington

**Fairwood Library** - 17009 140th Avenue SE, Renton

**Kentridge High School** - 12430 SE 208th Street, Kent

**North Bend Library** - 115 E 4th Street, North Bend

**Renton Public Health Center** - 3201 NE 7th Street, Renton

**Tahoma School District Building** - 25720 Maple Valley-Black Diamond Rd SE, Maple Valley

**2019-2020 Election Dates:****August 2019 Primary Election**

July 17 – Ballots and voters' pamphlets mailed. Vote center at King County Elections opens.

July 29 – Deadline to register or update your information online or by mail. Additional vote centers open.

Aug. 6 – Election Day. Ballots must be postmarked by today or deposited in a ballot drop box by 8 p.m.

Voters can register or vote in person until 8 p.m.

**November 2019 General Election**

Oct. 16 – Ballots and voters' pamphlet mailed. Vote center at King County Elections opens.

Oct. 28 – Deadline to register or update your information online or by mail. Additional vote centers open.

Nov. 5 – Election Day. Ballots must be postmarked by today or returned to a ballot drop box by 8 p.m.

Voters can register or vote in person until 8 p.m.

**February 2020 Special Election**

Jan. 22 – Ballots and voters' pamphlets mailed. Vote center at King County Elections opens.

Feb. 3 – Deadline to register or update your information online or by mail.

---

**Elections cont'd.**

Feb. 11 – Election Day. Ballots must be postmarked by today or returned to a ballot drop box by 8 p.m. Voters can register or vote in person until 8 p.m.

**March 2020 Presidential Primary Election**

Feb. 19 – Ballots and voters' pamphlet mailed. Vote center at King County Elections opens.

Mar. 2 – Deadline to register or update your information online or by mail. Additional vote centers open.

Mar. 10 – Election Day. Ballots must be postmarked by today or deposited in a ballot drop box by 8 p.m. Voters can register or vote in person until 8 p.m.

**April 2020 Special Election**

April 8 – Ballots and voters' pamphlets mailed. Vote center at King County Elections opens.

April 20 – Deadline to register or update your information online or by mail.

April 28 – Election Day. Ballots must be postmarked by today or deposited in a ballot drop box by 8 p.m. Voters can register or vote in person until 8 p.m.

---

**EXECUTIVE OFFICE**

**Executive Office - Performance, Strategy & Budget (PSB)**

**Budget:** King County uses a biennial (two-year) budget, and the 2019-2020 budget was adopted in November 2018. It totals \$11.7 billion, with a General Fund budget of \$1.86 billion, and budget reflects several reorganizations, including the new departments of Metro Transit, Local Services, and Human Resources. The King County Airport and the Fleet Services Division have been moved to the Department of Executive Services. Because of prudent financial practices and the strong regional economy, no significant service reductions were required and several expansions of services were included.

Looking ahead, revenue limitations imposed by the state will continue to adversely affect the General Fund, Public Health Fund, and Roads Fund. The Roads Fund is stable for 2019-2020 but has far less money than is needed to maintain the existing road system. Current projections suggest that no money will be available for Roads capital projects by 2025. PSB continues to support tax reform efforts to address these long-term financial problems.

Contact: Dwight Dively (206-263-9687 or [dwight.dively@kingcounty.gov](mailto:dwight.dively@kingcounty.gov))

Contact: Aaron Rubardt (206-263-9715 or [aaron.rubardt@kingcounty.gov](mailto:aaron.rubardt@kingcounty.gov))

**Continuous Improvement:** PSB continues to use the Lean continuous improvement methodology to transform the systems, tools, processes, and culture in county operations to drive greater efficiency and effectiveness in the services and products we provide to our communities.

Contact: Gary Kurihara (206-263-8026 or [gary.kurihara@kingcounty.gov](mailto:gary.kurihara@kingcounty.gov))

**Performance & Strategy:** PSB continues to use proven management tools such as strategic planning, performance measurement, public performance reporting, visual management, and Executive performance reviews to align key county priorities, ensure accountability for strategic and operational performance, and to communicate to the public how the county is doing on delivering effective, efficient, and equitable services. A new public performance reporting portal should be available in fall 2019.

The Criminal Justice Strategy and Policy Section is leading an effort to identify potential efficiencies in the criminal justice system and has a \$2 million budget to make investments to achieve such efficiencies. The section is also providing critical support to the Executive's Zero Youth Detention initiative.

Contact: Michael Jacobson (206-263-9622 or [michael.jacobson@kingcounty.gov](mailto:michael.jacobson@kingcounty.gov))

---

**EXECUTIVE SERVICES**

**Records and Licensing Services (RALS)**

**Community Service Centers:** The King County Community Service Center Program works to make it easier to get common tasks done via sites located throughout the county. Service offerings vary by location, so check [kingcounty.gov/CSC](http://kingcounty.gov/CSC) or call ahead before visiting. Services may include:

- Certified copies of recorded documents, including marriage certificates
- King County property tax payments
- Washington State marriage license applications

---

**Executive Services cont'd.**

- King County pet license applications and renewals
- U.S. passport applications
- Information on other county services and programs, such as senior property tax exemptions, assessment appeal forms, property assessment information, transit information, and King County job listings and applications

**Issaquah Community Service Center**

5415 220th Avenue SE (inside the Issaquah District Court building), Issaquah  
Contact: 206-477-2169 | Hours: Wednesdays and Thursdays, 8:30 a.m. - 4:30 p.m.

**Kent Community Service Center**

401 Fourth Avenue N., Suite GD (inside the Maleng Regional Justice Center building), Kent  
Contact: 206-477-4880 | Hours: Mondays and Tuesdays, 8:30 a.m. - 4:30 p.m.

**Black River (Renton) Community Service Center**

919 SW Grady Way (inside the King County Elections building), Renton  
Contact: 206-477-4881 | Hours: Monday thru Friday, 8:30 a.m. - 4:30 p.m.

Note: Passport application processing ends at 4 p.m.

**Seattle Downtown King County Administration Building**

500 Fourth Avenue, Seattle, WA  
Contact: 206-477-6620 | Hours: Monday through Friday: 8:30 a.m. - 4:30 p.m.

**Shoreline Community Service Center**

18050 Meridian Avenue N. (inside the Shoreline District Court building), Shoreline  
Contact: 206-477-2723 | Hours: Fridays only, 8:30 a.m. - 4:30 p.m.  
King County Recorder's Office (206-477-6620 or [kingcounty.gov/CSC](http://kingcounty.gov/CSC))

**Regional Animal Services of King County:** Provides service to all unincorporated areas of King County, as well as 24 contracting cities. Services include:

- Animal control response: [kingcounty.gov/AnimalControl](http://kingcounty.gov/AnimalControl) 206-296-7387 (PETS) or 9-1-1
- Pet licensing: [kingcounty.gov/LicenseMyPet](http://kingcounty.gov/LicenseMyPet) 206-296-2712 or [PetLicense@kingcounty.gov](mailto:PetLicense@kingcounty.gov)
- Pet adoptions: [kingcounty.gov/AdoptAPet](http://kingcounty.gov/AdoptAPet) 206-296-3936 or [AdoptAPet@kingcounty.gov](mailto:AdoptAPet@kingcounty.gov)
- Lost and found pets: [kingcounty.gov/LostAPet](http://kingcounty.gov/LostAPet) 206-296-7387 (PETS) or [LostPets@kingcounty.gov](mailto:LostPets@kingcounty.gov)
- Volunteer and foster program: [kingcounty.gov/RASKCVolunteer](http://kingcounty.gov/RASKCVolunteer), 206-225-4899 or [Volunteers@kingcounty.gov](mailto:Volunteers@kingcounty.gov)
- Education and community outreach: 206-296-7387 (PETS) or [Pets@kingcounty.gov](mailto:Pets@kingcounty.gov)

**Emergency Management**

**Disaster planning and public alerts:** A number of hazards – from earthquakes to severe weather – threaten Western Washington. There are specific things residents can do to stay safe and protect property during these sometimes devastating conditions. King County Emergency Management provides disaster preparedness resources, tips, and checklists in multiple languages. Community disaster skills workshops are offered at no charge throughout the year at community centers and libraries throughout King County. For more information, visit [kingcounty.gov/prepare](http://kingcounty.gov/prepare) or call 206-296-3830. Emergency Management also administers regional public alerts by text, email, and phone to help residents stay safe and informed about potential hazards and threats. Sign-up is free at [kingcounty.gov/ALERT](http://kingcounty.gov/ALERT).

3511 NE Second Street, Renton  
Contact: 206-296-3830 or [KCOEMPubEd@kingcounty.gov](mailto:KCOEMPubEd@kingcounty.gov)

---

**LOCAL SERVICES**

Local Services became a stand-alone King County department at the start of 2019. Led by Director John Taylor, the 500-employee agency now focuses solely on serving and communicating with people and communities in the unincorporated areas of the county.

King County has always delivered critical services to residents and businesses in these areas, but the new department now serves as a “virtual city hall” to coordinate the delivery of those services.



---

### Local Services cont'd.

The department has three programs that are already familiar to those in unincorporated areas:

- The Permitting Division handles development permits, code enforcement, and subarea planning.
- The Road Services Division maintains 1,500 miles of county roadway and 182 bridges.
- The Community Service Areas program provides tailored planning, outreach, and other county services to unincorporated areas via seven Community Service Areas.

#### Contact us

- Questions or comments: [ASKLocalServices@kingcounty.gov](mailto:ASKLocalServices@kingcounty.gov) or 206-477-3800
- Local Services website: <https://kingcounty.gov/local-services>
- Local Services on Instagram/Facebook: @kingcountylocalservices
- Permitting Division: [DPERWebinquiries@kingcounty.gov](mailto:DPERWebinquiries@kingcounty.gov) or 206-296-6600

Road Services: call the 24/7 Road Helpline at 206-477-8100 or 800-527-6237 (800-KCROADS), or email [maint.roads@kingcounty.gov](mailto:maint.roads@kingcounty.gov)

## ROADS SERVICES

### BRIDGE REPAIR

**Landsburg Bridge 3075 Repair:** This project will repair and overlay the bridge deck, which currently requires constant maintenance. A web page with project details will be available by the end of June at <https://kingcounty.gov/depts/local-services/roads.aspx>. This work will require a 21-day closure.

Contact: Brent Champaco (206-477-9094 or [brent.champaco@kingcounty.gov](mailto:brent.champaco@kingcounty.gov))

### COUNTYWIDE PROJECTS AND PROGRAMS

**2017-2018 Countywide Guardrail:** Existing guardrail and guardrail end terminals will be upgraded to make the roads safer and potentially reduce the severity of crashes. Construction began April 22, 2019, and will continue through the end of summer/beginning of fall. Most work will require lane restrictions rather than full closures.

**2019 Pavement Preservation:** Extends the useful life of existing roadways by repairing defects in pavement and sealing the road foundation from weather damage. The work will begin later this spring or early this summer and continue into the fall. Work is highly weather dependent.

<https://kingcounty.gov/depts/local-services/roads/paving-projects.aspx>

### ONLINE RESOURCES

**24/7 Road Helpline:** In unincorporated King County, contact us for help with road maintenance and traffic safety issues, such as downed stop signs, signals that are out or trees over the roadway – 24 hours a day, seven days a week. Contact: 206-477-8100 or 800-527-6237 | [maint.roads@kingcounty.gov](mailto:maint.roads@kingcounty.gov)

**My Commute:** Travel tools and resources for the greater Puget Sound area – commuting resources, road closures, restrictions, and traffic cameras.

<https://kingcounty.gov/mycommute> | [webteam.roads@kingcounty.gov](mailto:webteam.roads@kingcounty.gov)

**Road Alert:** Find travel alert information about road closures or conditions that have significant impact on roads in unincorporated areas of King County. Email subscriptions available.

<https://kingcounty.gov/roadalert> | [webteam.roads@kingcounty.gov](mailto:webteam.roads@kingcounty.gov)

## PERMITS

The Department of Local Services, Permitting Division is the agency that provides land use, building and fire regulatory and operating permits, code enforcement and a limited number of business licenses for unincorporated areas of King County.

### Department of Local Services, Permitting Division

Contact: 206-296-6600 | [DPERWebinquiries@kingcounty.gov](mailto:DPERWebinquiries@kingcounty.gov)

35030 SE Douglas Street, Suite 210, Snoqualmie

Mon, Tues, Thur, Fri: 7:30-11:30 am & 1:00-3:00 pm

Wednesday: Closed

---

## METRO

**Income-based fare program:** Metro has a variety of fares to make transit service more affordable and accessible, but has heard from customers that the fare is still a barrier for some residents. To address these concerns, the King County Council asked Metro to establish an income-based fare program for residents with no and very low incomes and to implement the new program by March 2020.

Metro is working with a stakeholder advisory group and engaging with customers to develop program options that address the affordability needs of customers with no and very low incomes. The stakeholder advisory group will convene in late June to consider these options, and Metro will submit an implementation report to the King County Council in September.

This work is intended to address the affordability issue for residents with the lowest incomes, but through this effort, Metro has heard about other barriers including access to service and knowledge about current reduced-fare programs. Metro is using that feedback to improve programs and systems through the long-range METRO CONNECTS plan.

Contact: Lindsey Greto (206-263-7886 or [lindsey.greto@kingcounty.gov](mailto:lindsey.greto@kingcounty.gov))

## Maple Valley

143: Route 143 operates between Downtown Seattle and Black Diamond, passing through Maple Valley via Maple Valley-Black Diamond Road. The route operates during weekday peak periods only, going to downtown Seattle in the morning peak and to Black Diamond in the afternoon peak. Trips operate very frequently during these time periods as often as every 7 minutes.

- 168: Route 168 connects Kent Station and Maple Valley. It runs every half-hour during the week and hourly on the weekends.
- 907: Route 908 is a DART route that operates between Renton Transit Center and Black Diamond, passing through Maple Valley via Maple Valley-Black Diamond Road. The route has flexible dial-a-ride areas along Maple Valley-Black Diamond Road. The route operates every hour on weekdays.

---

## NATURAL RESOURCES & PARKS

### PARKS

**Future Funding for King County Parks:** The 2020-2025 King County Parks, Recreation, Trails, and Open Space Levy ballot measure is a property tax levy lid lift that would replace the current parks levy expiring at the end of 2019. It would fund operations and maintenance of King County's parks and trails, support the growth and connection of regional trails, and establish grant programs to expand access to recreation and protect open space for King County residents. Proceeds from the levy would also directly support parks in King County's cities, as well as the Woodland Park Zoo and the Seattle Aquarium. This measure will be on the August 6, 2019 primary election ballot.

Contact: Kathryn Terry (206-477-4526 or [kathryn.terry@kingcounty.gov](mailto:kathryn.terry@kingcounty.gov)) or see <https://kingcounty.gov/parks/levy>

**Parks Customer Service and Outreach:** Parks is piloting a new mobile and online tool called SeeClickFix for park and trail visitors to report issues and make suggestions.

Contact: Rogelio Diaz (206-477-4527 or [rodiaz@kingcounty.gov](mailto:rodiaz@kingcounty.gov))

**Ravensdale Park:** Ravensdale Park Foundation has begun preliminary feasibility and conceptual design development for Ravensdale Park Phase 3. Per the adopted master plan, Phase 3 would include the synthetic conversion of the multi-use grass field (near Gracie Hansen building), 200+ parking spots, upgraded/expanded restroom capacity on the east side of the park, and related utilities and infrastructure. Community outreach, planning, and design development will start in summer 2019 and continue through 2019 and beyond. A community meeting will be planned in July to share the initial feasibility information and possible layout concepts based on identified opportunities and constraints.

Contact: T.J. Davis (206-229-3965 or [tj.davis@kingcounty.gov](mailto:tj.davis@kingcounty.gov))

**Black Diamond/Henry's Ridge/Ravensdale Retreat Forest Stewardship:** In 2018, King County Parks and the Water and Land Resources Divisions thinned some of the forest at Henry's Ridge Open Space and planted more than 1,500 seedlings for forest health and to support the county's One Million Trees project. Parks will also thin some of the forest at Ravensdale Retreat Natural Area later this year.

Contact: Kelly Heintz (206-477-6478 or [kelly.heintz@kingcounty.gov](mailto:kelly.heintz@kingcounty.gov))

---

## **Parks cont'd.**

**Taylor Mountain Forest Stewardship:** In Fall 2018, King County Parks and the Water and Land Resources Divisions thinned some of the alder trees at Taylor Mountain Forest and planted more than 49,000 tree seedlings for forest health and to support the county's One Million Trees project. The project is intended to convert alder stands to conifer forest, in order to provide improved wildlife habitat and resilience to climate change.

Contact: Kelly Heintz (206-477-6478 or [kelly.heintz@kingcounty.gov](mailto:kelly.heintz@kingcounty.gov))

**Green to Cedar Rivers Regional Trail:** Design is currently underway for the north segment of the Green to Cedar Rivers Trail through the City of Maple Valley. Construction of the North A Segment, a 1.85-mile stretch from the Cedar River Trail to the north end of Lake Wilderness Park, is included in the 2020-2025 Parks Levy. The Preliminary design for the south segment is now complete. As funding becomes available for additional design and construction, the preliminary plan gives a roadmap of project phasing and costs that will help plan further development of the trail for the future.

Project website: <https://kingcounty.gov/greentocedartrail>

Contact: Linda Frkuska (206-477-4484 or [linda.frkuska@kingcounty.gov](mailto:linda.frkuska@kingcounty.gov))

Contact: Jean White (206-477-4846 or [jean.white@kingcounty.gov](mailto:jean.white@kingcounty.gov))

**Lake Francis Park:** King County Parks will repair curbing and repave the parking lot at Lake Francis Park. Design is currently underway, and construction is expected to begin by the end of 2019.

Contact: Josh Tasler (206-263-8993 or [Josh.Tasler@kingcounty.gov](mailto:Josh.Tasler@kingcounty.gov))

**Danville-Georgetown Open Space:** Friends of Rock Creek Horse Park, a Community Partnerships and Grants Program partner with King County Parks, is in the process of planning and gaining approval to build an equestrian arena and trailhead. If approved, construction could happen as soon as summer 2020.

Contact: Scott Thomas (206-477-4586 or [scott.thomas@kingcounty.gov](mailto:scott.thomas@kingcounty.gov))

**Black Diamond Open Space:** Evergreen Mountain Bike Alliance, a Community Partnerships and Grants Program partner with King County Parks, completed approximately six miles of a looping trail system for hikers and mountain bikes in the Black Diamond Open Space in 2018. Parks also received a proposal for trail construction on the Herbrand parcel from the alliance.

Contact: Scott Thomas (206-477-4586 or [scott.thomas@kingcounty.gov](mailto:scott.thomas@kingcounty.gov))

## **COMPLETED PROJECTS**

**Soos Creek Trail Pavement Rehabilitation:** Parks finished a pavement overlay for the Soos Creek Trail in 2018 as part of its ongoing Countywide Regional Trails Pavement Rehabilitation Program.

Contact: Jason Rich (206-477-4582 or [Jason.Rich@kingcounty.gov](mailto:Jason.Rich@kingcounty.gov))

**Acquisitions:** Parks acquired properties owned by two separate owners totaling approximately 120 acres, protecting key forested parcels next to the Cougar Squak Corridor.

Contact: Kelly Heintz (206-477-6478 or [kelly.heintz@kingcounty.gov](mailto:kelly.heintz@kingcounty.gov))

**Black Diamond Open Space:** Parks completed the Black Diamond Area Stewardship Plan, a 10-year vision that provides recommendations for managing the land. The recommendations provide guidance for forest stewardship, public use, protection of natural resources, environmental education, preservation of cultural resources, and implementing the county's equity and social justice initiative.

Contact: Kelly Heintz (206-477-6478 or [kelly.heintz@kingcounty.gov](mailto:kelly.heintz@kingcounty.gov))

## **ONGOING PROJECTS**

**Ongoing maintenance and community outreach:** includes Taylor Mountain, Ravensdale Park, Black Diamond, Cedar River Trail, Spring Lake, McGarvey, Danville-Georgetown, Henry's Ridge, and other park facilities within the service area, as well as ongoing conservation easement monitoring. Backcountry trail improvements are being made at Henry's Ridge as well. Ongoing reforestation projects in Taylor Mountain and McGarvey parks will continue for the next few years. Knotweed control efforts continue along the Cedar River to comply with noxious weed regulations. Restoration work by Parks staff and volunteers has occurred at several natural areas along the Cedar River including Cavanaugh Pond and Belmondo Reach Natural Area. Other activities include community outreach with user groups within the service area.

Contact: Nick Halverson (206-477-6138 or [nick.halverson@kingcounty.gov](mailto:nick.halverson@kingcounty.gov))

**Volunteer and Restoration Programs:** Tasks included trail maintenance, new trail construction, planting native trees and shrubs, and removing invasive plants. Sites include Black Diamond Open Space, Wetland 14, Ravensdale, Taylor Mountain Forest, Cavanaugh Pond Natural Area, McGarvey Park, Cedar

---

## **Parks cont'd.**

Creek Park, and the Spring Lake / Lake Desire Complex. The South Seattle Sierra Club, Tahoma Backcountry Horsemen, Washington Trails Association, and the Tahoma School District (which provides classes) are very active volunteer groups in this area.

Our Volunteer and Restoration Programs work together closely to improve the health, beauty, and ecosystem functions of our parks and natural areas throughout the county. In addition to all of the service that volunteers contribute, our Restoration Program staff coordinate and perform invasive plant removal, restoration planting, and other tasks. These programs planted 58,700 native plants, over 52,000 of them were trees planted in 2018, working towards King County's Million Tree Initiative.

Volunteers provide an average of 50,000 hours of service in our parks, trails and natural areas each year. From building and repairing backcountry trails to removing invasive plants and planting native plants to promoting recycling and composting at summer concerts, these volunteers are a vital part of the maintenance and improvement of the system. These volunteers play an important role in stewarding our 28,000 acres of open space. Signup for the volunteer newsletter for a listing of scheduled events in the area at: <https://Volunteer - King County> - Want to know what it's like to volunteer with us? Check out our video: <https://Volunteer with King County Parks on Vimeo>. If you, your group or business are interested in doing a volunteer project at your favorite King County Park site, we can work with you to plan a custom event. Contact: Lina Rose (206-477-6101 or [lina.rose@kingcounty.gov](mailto:lina.rose@kingcounty.gov))

**Maplewood Pony Club at Danville-Georgetown Open Space:** the Maplewood Pony Club, a Community Partnerships and Grants Program partner with King County Parks, has a grant to continue working on an equestrian arena at the Danville-Georgetown Open Space. The project is advancing from concept-level design to schematic-level design. With the CAD drawings, the group will engage staff and the public to get initial feedback on the project.

Contact: Scott Thomas (206-477-4586 or [scott.thomas@kingcounty.gov](mailto:scott.thomas@kingcounty.gov))

**Youth and Amateur Sports Grant Program:** King County Parks administers the Youth and Amateur Sports Grants program, which promotes fit and healthy communities by investing in programs and capital projects that reduce barriers to access physical activity. Applications are open each January and awards announced in May. The City of Covington was recently awarded a \$100,000 grant for improvements to its pool.

<https://kingcounty.gov/services/parks-recreation/parks/get-involved/partnerships-and-grants/yasg.aspx>  
Contact: Butch Lovelace (206-477-4577 or [butch.lovelace@kingcounty.gov](mailto:butch.lovelace@kingcounty.gov))

**Trailhead Direct:** The weekend and holiday transit-to-trails service co-led by King County Metro and King County Parks launched on April 20, with more routes connecting hikers to more backcountry trails. The second full season offers additional pick-up sites including the Tukwila International Boulevard Station with service to more trailheads, including Little Si near North Bend and the Sky Country Trailhead in Cougar Mountain Regional Wildland Park. Hikers will now be able to board any of the four Trailhead Direct routes to get to any of the trails in the network, including Mount Si and Mailbox Peak. Passengers rode Trailhead Direct for more than 10,000 hikes last season when the service expanded, thanks to additional funding from the City of Seattle.

Contact: Ryan Dotson (206-477-4562 or [ryan.dotson@kingcounty.gov](mailto:ryan.dotson@kingcounty.gov)) or visit <https://trailheaddirect.org>

**Family Movie Nights:** join King County Parks for a special outdoor movie night at Ravensdale Park on Saturday, July 6. This is a free event, so bring your low-backed chairs, blankets, and snacks and enjoy a relaxed evening in the park. The movie will be projected onto a 40-foot tall inflatable movie screen so invite your friends, teammates and family -- we've got space!

King County Parks is partnering with the Si View Metropolitan Parks District, City of Snoqualmie, West Hill Community Association, City of Auburn, and the City of Carnation to support local and free outdoor cinema across King County

Contact: Elizabeth Jessup (206-263-0584 or [elizabeth.jessup@kingcounty.gov](mailto:elizabeth.jessup@kingcounty.gov))

## **SOLID WASTE DIVISION**

### ***Time Limited 2019 projects that are scheduled for work and completion in 2019-20***

**Comprehensive Solid Waste Management Plan Update:** On April 24, 2019, the King County Council approved the 2019 Comprehensive Solid Waste Management Plan. The next step in the adoption process is for King County's 37 partnering cities to approve it. Cities have 120 days (from 5/20/19 to 9/16/19) to act on the plan. City approval of the 2019 plan requires approval by cities representing three-quarters of

---

### **Solid Waste cont'd.**

the total population of the cities that act on the Plan during the 120-day period. An approved city/county plan will then be sent to the Washington State Department of Ecology for a final 45-day review and approval period. Final approval is expected by November 2019.

Website: <https://kingcounty.gov/depts/dnrp/solid-waste/about/planning/comp-plan.aspx>

Contact: Beth Humphreys (206-477-5264 or [beth.humphreys@kingcounty.gov](mailto:beth.humphreys@kingcounty.gov))

### **COMPLETED PROJECTS**

**New Area 8 Landfill Cell:** For the past three years, the Solid Waste Division has been working on constructing a new landfill disposal cell at the Cedar Hills Regional Landfill, Area 8. Construction of Area 8 included excavating about two million cubic yards of soil and installing environmental controls for leachate and landfill gas collection. With construction complete, Area 8 will begin receiving garbage for disposal in July 2019.

### **ONGOING PROJECTS**

**Cleanup LIFT:** Cleanup LIFT offers a \$12 discount for low-income customers on garbage, refrigerant, appliances and yard waste collection services at recycling and transfer stations. To receive the discount, customers show their ORCA LIFT, EBT, or Provider One cards when paying. The discount is good for each type of material, each visit.

Website: <https://kingcounty.gov/depts/dnrp/solid-waste/facilities/disposal-fees.aspx>

### **Waste Reduction and Recycling Outreach and Education**

**Recycle More/Recicla Mas:** Education and outreach to single-family residents on how to recycle and compost more materials in curbside programs. Includes targeted outreach to the Spanish-speaking Latinx community in King County.

Website: <https://kingcounty.gov/depts/dnrp/solid-waste/garbage-recycling/recycle-more.aspx>

Facebook: <https://www.facebook.com/kcreciclamas>; <https://www.facebook.com/recyclemore>

**K-12 Schools program:** Assembly programs, classroom workshops, and assistance to student Green Teams.

Website: <https://kingcounty.gov/depts/dnrp/solid-waste/programs/education/secondary-school.aspx>

**Green Schools Program:** Helps more than 250 public and private K-12 schools and 13 school districts to initiate and improve waste reduction, recycling, energy and water conservation, and other conservation practices. Recognizes schools and school districts that complete criteria in the program's Best Practices Guides.

Website: <https://kingcounty.gov/depts/dnrp/solid-waste/programs/greenschools.aspx>

**Recycling Collection Events:** King County funding provided to cities and unincorporated areas to offer events for residents and businesses to recycle select materials.

Website: <https://kingcounty.gov/depts/dnrp/solid-waste/garbage-recycling/events.aspx>

**EcoConsumer:** Offering free community repair events in communities throughout King County. The EcoConsumer public outreach program also provides information and resources about waste reduction and other environmental concerns to the public and media through TV and radio segments, articles, presentations, social media and more.

Website: <https://www.kingcounty.gov/depts/dnrp/solid-waste/programs/ecoconsumer.aspx> or [www.KCecoconsumer.com](http://www.KCecoconsumer.com)

Contact: Tom Watson (206-477-4481 or [tom.watson@kingcounty.gov](mailto:tom.watson@kingcounty.gov))

**Green Tools:** This green building program supports county agencies, cities, the building community, and the public in designing buildings and structures that have fewer impacts on the environment, are energy efficient, and use recycled materials.

Website: <https://kingcounty.gov/depts/dnrp/solid-waste/programs/green-building.aspx>

**Construction & Demolition Waste (C&D):** Construction and demolition recycling requirements have rolled out around the County – an informational presentation can be scheduled for your CSA by contacting Website:

<https://kingcounty.gov/depts/dnrp/solid-waste/programs/green-building/construction-demolition.aspx>

Contact: Kinley Deller | [kinley.deller@kingcounty.gov](mailto:kinley.deller@kingcounty.gov).

**LinkUp:** Works with businesses, agencies, and other organizations in the Puget Sound area to expand markets for selected recyclable and reusable materials.

---

### **Solid Waste cont'd.**

Website: <https://kingcounty.gov/depts/dnrp/solid-waste/programs/linkup.aspx>

**Recycle Right:** The Recycle Right Communications Consortium provides outreach and messaging resources for local jurisdictions to help educate the public on how to Recycle Right. This means making sure recycling is empty, clean, and dry; only recycling what can actually be turned into something new; and checking with your recycling collection company if you are unsure if something is recyclable or not.

Website: <https://kingcounty.gov/depts/dnrp/solid-waste/garbage-recycling/recycle-right.aspx>

Contact: Matt Manguso (206-477-7914 or [matt.manguso@kingcounty.gov](mailto:matt.manguso@kingcounty.gov))

**Customer Service:** Information/education provided to customers/public on Solid Waste Division services via web pages and phone support.

Contact: Solid Waste Division Customer Service (206-477-4466 | TTY Relay: 711)

Website: <https://your.kingcounty.gov/solidwaste/index.asp>

### **Transfer Stations**

**The Enumclaw Recycling and Transfer Station** is a facility where residents and businesses bring their garbage for disposal and their recyclable materials for recycling. Detailed information about the materials accepted for recycling and disposal can be found on the website.

Website: <https://kingcounty.gov/depts/dnrp/solid-waste/facilities/transfer/enumclaw-transfer.aspx>

Contact: Solid Waste Division Customer Service (206-477-4466 | TTY Relay: 711)

**The Renton Recycling and Transfer Station** is a facility where residents and businesses bring their garbage for disposal and their recyclable materials for recycling. Detailed information about the materials accepted for recycling and disposal can be found on the website.

Website: <https://kingcounty.gov/depts/dnrp/solid-waste/facilities/transfer/renton-transfer.aspx>

Contact: Solid Waste Division Customer Service (206-477-4466 | TTY Relay: 711)

**South County Recycling and Transfer Station:** Since 2012, the Solid Waste Division has been working to site, design, and construct a new South County Recycling and Transfer Station to replace the aging and outdated Algona Transfer Station. The new station will be at 35101 West Valley Highway South, just north of the existing Algona Transfer Station. The project is currently in the design phase, and has held in-person and online open houses to receive public comments so the new facility reflects the needs of the surrounding community. A Design Advisory Group has also been formed to receive further public input. This new facility will provide cleaner, safer, and more efficient operations; expand customer options with easy-to-use recycling, yard waste, and garbage services; add a hazardous waste disposal service similar to the one at King County's Factoria station in Bellevue; and decrease wait times and traffic congestion. Final design is expected by 2021 and construction is planned from 2012-2023. The new station is expected to open in late 2023.

Contact: Doug Chin (206-477-5217 or [Doug.Chin@kingcounty.gov](mailto:Doug.Chin@kingcounty.gov))

**New Northeast Recycling and Transfer Station:** For several years, King County has been modernizing its 1960s-era recycling and transfer stations to improve service. The 2019 Comprehensive Solid Waste Management Plan recommends that modernization continue with replacement of the aging Houghton Transfer Station in Kirkland by a new Northeast Recycling and Transfer Station. Planning for this project has begun. Opportunities for the public to learn more and provide input are anticipated in mid-2020.

Contact: Tom Creegan (206-477-5218 or [Tom.Creegan@kingcounty.gov](mailto:Tom.Creegan@kingcounty.gov))

**Household hazardous waste collection:** Offers free collection of hazardous waste from households and qualifying businesses at two fixed collection sites and the travelling Wastemobile.

- Factoria Household Hazardous Waste Drop Off Service
- Auburn Wastemobile at The Outlet Collection
- Covington Wastemobile Event

Website: <https://kingcounty.gov/depts/dnrp/solid-waste/facilities/hazardous-waste.aspx>

Wastemobile schedule: <http://www.hazwastehelp.org/HHW/wastemobile.aspx>

Household Hazards Line: 206-296-4692

**Litter and Illegal Dumping:** Includes several programs:

- **Community Litter Cleanup** - Coordinate cleanup of illegal dumpsites and litter on public property.

Contact: Morgan John (206-477-4624 or [morgan.john@kingcounty.gov](mailto:morgan.john@kingcounty.gov))

---

### **Solid Waste cont'd.**

- **Illegal Dumping Hotline** – Hotline for reporting illegal dumping, directs those complaints to the appropriate agency for follow up.  
Hotline: 206.296.SITE (7483)
- **Junk Vehicle** – Provides information and facilitates removal of abandoned vehicles from private property.  
Contact: Mary Impson (206-477-0297 or [mary.impson@kingcounty.gov](mailto:mary.impson@kingcounty.gov))
- **Community Cleanup Assistance Program** – Financial assistance (waived tip fees) to private property owners who are either low income or whose property has been dumped on.  
Contact: Terri Barker (206-4770-5214 or [terri.barker@kingcounty.gov](mailto:terri.barker@kingcounty.gov))  
Website: <https://kingcounty.gov/depts/dnrp/solid-waste/programs/litter-dumping.aspx>

### **Landfill Operations and Neighbor Outreach**

**Cedar Hills Regional Landfill:** On 920 acres in unincorporated King County near Maple Valley, the Cedar Hills Regional Landfill, has provided for the safe and efficient disposal of King County's solid waste since 1965. Most of the waste received at Cedar Hills is mixed municipal solid waste from King County's various transfer stations. Environmental control systems are in place throughout the landfill to manage gas, leachate, stormwater and groundwater. The landfill operates seven days a week, 362 days each year, and is closed to the general public. The onsite Bio Energy Washington gas-to-energy facility processes landfill gas into pipeline-quality biogas. The renewable gas generated at Bio Energy Washington is able to meet the natural gas needs of about 19,000 homes. For questions, more information, or to report a landfill concern, call 206-477-4466.

Website: <https://kingcounty.gov/depts/dnrp/solid-waste/facilities/landfills/cedar-hills.aspx>

**Cedar Hills Regional Landfill Community Meetings:** Provides an ongoing forum for landfill neighbors to learn about current and planned activities at King County's landfill and at Bio Energy Washington's landfill gas-to-energy facility. Meetings are held twice a year.

Website: <https://kingcounty.gov/depts/dnrp/solid-waste/facilities/landfills/cedar-hills-meetings.aspx>

Contact: Polly Young (206-477-5266 or [polly.young@kingcounty.gov](mailto:polly.young@kingcounty.gov))

**Cedar Grove Compost:** Near the Cedar Hills Regional Landfill is the privately owned Cedar Grove Composting. The facility is not managed or operated by King County. Contact Cedar Grove by calling 877-764-5748. Website: <https://cedar-grove.com>

**Closed and Custodial Landfill Maintenance and Monitoring:** Maintain and monitor groundwater, surface water, wastewater, and landfill gas at closed landfills, including: the Cedar Falls and Hobart landfills.

Website: <https://kingcounty.gov/depts/dnrp/solid-waste/facilities/landfills/closed-landfills.aspx>

Contact: Anne Holmes (206-477-5223 or [anne.holmes@kingcounty.gov](mailto:anne.holmes@kingcounty.gov))

**Hobart Closed Landfill Flying Field:** The radio controlled Flying Field at Closed Hobart Landfill is managed by a partnership between King County and Lake Sawyer Hawks, a community RC club that operates and maintains the field with volunteers. Anyone wanting to use the facility must join the RC club to gain access so that King County can ensure users are complying with facility rules, including noise limits. When logging a noise complaint, it's important to include the exact day and time when the noise occurred.

Website: <https://www.lakesawyerhawks.org/>

Contact: T.J. Davis (206-229-3965 or [tj.davis@kingcounty.gov](mailto:tj.davis@kingcounty.gov))

### **WATER & LAND RESOURCES DIVISION**

**Riverbend Levee Setback and Floodplain Restoration Project:** The project will remove and set back 3 levees/revetment on the left bank of the Cedar river to restore floodplain connectivity, enhance flood-water conveyance and storage, and create better salmon spawning and rearing habitat in the existing channel. The project began design in 2015, and construction is expected in 2020.

Website: <https://kingcounty.gov/services/environment/animals-and-plants/restoration-projects/river-bend-levee-setback.aspx>

Contact: Jon Hansen (206-477-4706 or [jon.hansen@kingcounty.gov](mailto:jon.hansen@kingcounty.gov))

**Taylor Creek Mitigation Project:** This project will restore wetland and stream habitat in the lower reaches of Taylor Creek, a tributary to the lower Cedar River near Maple Valley. The project will provide mitigation credits for King County's In-Lieu Fee Mitigation Program. Project design, permitting, and

---

## Water & Land cont'd.

outreach were completed in 2017 and 2018, with construction in 2019. Website: <https://kingcounty.gov/services/environment/water-and-land/wetlands/mitigation-credit-program/mitigation-sites/project-taylor-cedar.aspx>

Contact: Dan Eastman (206-477-4684 or [dan.eastman@kingcounty.gov](mailto:dan.eastman@kingcounty.gov))

**SR 169 Flood Risk Reduction Feasibility Study:** During moderate flood events in the Cedar River Basin, State Route 169 floods just west of Cedar Grove Road, forcing closure of the road causing significant detours for residents in the valley, and isolating residents in the immediate area. The King County River and Floodplain Management Section, with funding from the King County Flood Control District, has completed a feasibility study identifying the causes of the flooding and selecting a design alternative to address the problem. The preferred alternative will be developed in partnership with the Washington State Department of Transportation.

Contact: Tracy Winjum (206-263-0174 or [twinjum@kingcounty.gov](mailto:twinjum@kingcounty.gov))

**Herzman Levee Setback and Trail Stabilization Project:** The Herzman Levee, located along the Cedar River about four miles east of the I-405/SR-169 interchange, is over-steep, prone to seepage, and artificially confines the river, forcing it to flow directly toward a revetment that protects the Cedar River Trail and SR-169. The King County River and Floodplain Management Section, with funding from the King County Flood Control District, is designing a project that will modify the levee and stabilize the banks, enhancing the overall level of flood protection for neighboring homes and critical infrastructure. The project will also address the repeated damage these facilities have experienced as a result of erosion during past floods, leading to greater resiliency and fewer costly repairs. Preliminary design and alternative selection were completed in 2018. Final design is anticipated in 2020. Construction is expected to occur in 2021.

Contact: Nancy Sandford (206-477-4688 or [nancy.sandford@kingcounty.gov](mailto:nancy.sandford@kingcounty.gov))

**Jan Road Neighborhood Improvement Project:** The Jan Road Levee is located along the Cedar River about two miles north of Maple Valley. The levee is not tied into high ground and allows flooding of a private road that is the sole access for the neighborhood. Also, the levee directs concentrated flow toward the revetment protecting the Cedar River Trail and SR 169 on the opposite bank. The King County River and Floodplain Management Section, with funding from the King County Flood Control District, is considering alternatives for road elevation, culvert replacement, levee removal/setback, and the reconnection of approximately five acres of floodplain. Construction is expected to occur in summer 2021.

Contact: Dan Heckendorf (206.477.8459 or [dan.heckendorf@kingcounty.gov](mailto:dan.heckendorf@kingcounty.gov))

**Maplewood:** The King County River and Floodplain Management Section, with funding from the King County Flood Control District, is doing a feasibility study to evaluate potential landslide, flood, and erosion risk in the Maplewood neighborhood. Several homes within the Maplewood neighborhood are at risk from river flooding and bank erosion and could be surrounded by water and isolated during a 100-year flood. The extent of flood hazards could be affected by potential landslides from the steep slopes along the opposite river bank. Initial hazard analysis will be complete in fall 2019.

Contact: Kate Akyuz (206-477-4607 or [kate.akyuz@kingcounty.gov](mailto:kate.akyuz@kingcounty.gov))

**Watershed Restoration Streamflow Impacts for WRIA 8:** Washington has a new law that helps protect rivers and streams while providing water for homes in rural Washington. The law, primarily codified in [Streamflow Restoration \(Chapter 90.94 RCW\)](#), was passed and signed in January 2018. The Washington Department of Ecology immediately began implementing the law through the formation of committees in several priority watersheds, including WRIA 8 (Cedar-Lake Washington-Lake Sammamish). The law was in response to the [Hirst decision](#), a 2016 Washington State Supreme Court decision, and clarifies how counties issue building permits for rural homes that use a well for a water source. Website: [https://ezview.wa.gov/site/alias\\_1962/37321/watershed\\_restoration\\_and\\_enhancement\\_-\\_wria\\_8.aspx](https://ezview.wa.gov/site/alias_1962/37321/watershed_restoration_and_enhancement_-_wria_8.aspx)

**Salmon Habitat Restoration Program (SHRP) projects:** Working with local property owners and public agencies to design, permit, and construct habitat enhancement projects.

Contact: Laura Hartema (206-477-4708 or [laura.hartema@kingcounty.gov](mailto:laura.hartema@kingcounty.gov))

**Cedar River Garlic Mustard Detection and Control:** King County is surveying for and working to eradicate the Class A noxious weed garlic mustard, an alarming new invasive plant infesting properties on the Cedar River, before it gets spread further by floodwaters, animals, etc. On-going, seasonal



---

**Water & Land cont'd.**

Contact: Roy Brunskill (206-477-4656 or [roy.brunskill@kingcounty.gov](mailto:roy.brunskill@kingcounty.gov))

**ON-GOING PROJECTS**

**Land Conservation Initiative:** The King County Land Conservation Initiative is a bold effort to “finish the job” on land conservation in King County. Across the county, King County and city partners have identified 62,000 acres of the highest priority conservation lands in five separate categories: (1) urban parks/green space, (2) regional trails, (3) river & natural lands, (4) farmlands, and (5) forest lands. The initiative is a regional effort to permanently protect conservation land to provide benefits to today's residents and generations to come. The effort is county-wide – from the edge of Puget Sound east through urban areas and rural communities to the farm fields and river valleys at the foot of the Cascade Mountains. In the Snoqualmie Watershed, the county and city partners have identified more than 25,000 acres of high-conservation-value land.

Website: <http://kingcounty.gov/services/environment/water-and-land/land-conservation.aspx>.

Contact: Michael Murphy (206-477-4781 or [michael.murphy@kingcounty.gov](mailto:michael.murphy@kingcounty.gov))

**Fish Passage Restoration Program:** Removing barriers to fish passage is one of the most effective ways to quickly restore salmon habitat and help increase salmon abundance. King County is developing a sustainable program for comprehensive restoration of fish passage at existing barriers that are owned or operated and maintained by King County. The effort is county-wide. The goal of this program is to connect salmon with quality upstream habitat. Starting in 2019, King County field crews are surveying county stream crossings to determine if they prevent salmon from swimming upstream. The survey will help us identify projects that will allow the most salmon to reach the best habitat as quickly as possible.

Website: <http://kingcounty.gov/fishpassage>

Contact: Evan Lewis (206-477-9738 or [evlewis@kingcounty.gov](mailto:evlewis@kingcounty.gov))

**Salmon Recovery:** Local governments, tribes, community organizations, concerned citizens, businesses, and state and federal agencies are working together to protect and restore salmon habitat and watershed health. In 2005, local partners reached a major milestone when they completed watershed-based habitat recovery plans for the major watersheds in King County. These plans guide salmon recovery actions and federal, state, and local investments. These efforts restore fish and wildlife habitat, promote human health, support environmental stewardship, and ensure future generations will share the legacy of salmon returning to local streams and rivers each fall.

<https://govlink.org/watersheds/default.aspx>

Contact: Janne Kaje (206-477-4078 or [janne.kaje@kingcounty.gov](mailto:janne.kaje@kingcounty.gov))

**Green Shorelines:** Information and guidance to help lakeshore homeowners understand and implement Green Shoreline practices and green dock designs to benefit salmon and water quality.

<https://govlink.org/watersheds/8/action/GreenShorelines>

Contact: Laura West (206-477-7574 or [lwest@kingcounty.gov](mailto:lwest@kingcounty.gov))

**Salmon SEEs on:** Spot spawning salmon in the Lake Washington/Cedar/Sammamish, Green-Duwamish, and Snoqualmie watersheds each fall. Some sites and times have volunteer naturalists on hand; others are self-guided. Check the website for details. August-December 2019, depending on the site.

<https://govlink.org/watersheds/8/action/salmon-seeson>

Contact: Laura West (206-477-7574 or [lwest@kingcounty.gov](mailto:lwest@kingcounty.gov))

**Drainage and Water Quality**

**Complaint Investigations:** Respond to citizen concerns about stormwater runoff and surface water quality problems on both residential and commercial property in the unincorporated areas of King County.

<https://kingcounty.gov/environment/waterandland/stormwater/problem-investigation-line.aspx>

Drainage Complaint Line (206-477-4811)

**Minimize Stormwater Pollution:** Stormwater runoff comes from small, individual sources in all parts of the watershed. Stormwater pollution is a problem that residents can change by stopping small, individual activities that cause pollution and result in large-scale pollution.

<https://kingcounty.gov/environment/waterandland/stormwater/introduction/stormwater-runoff.aspx>

**Neighborhood Drainage Assistance Program:** Addresses private flooding, erosion, and sedimentation problems. The program can design and fund capital improvement projects, repair existing drainage systems, and provide technical assistance for questions about construction, maintenance, permits, and storm drainage.

---

**Water & Land cont'd.**

<https://kingcounty.gov/environment/waterandland/stormwater/neighborhood-drainage-ssistance.aspx>

Contact: Brian Sleight (206-477-4826 or [brian.sleight@kingcounty.gov](mailto:brian.sleight@kingcounty.gov))

**Agricultural Drainage Assistance Program:** Provides both technical and financial assistance to help agricultural property owners improve drainage of their fields.

<https://kingcounty.gov/environment/waterandland/stormwater/neighborhood-drainage-ssistance.aspx>

Contact: Brian Sleight (206-477-4826 or [brian.sleight@kingcounty.gov](mailto:brian.sleight@kingcounty.gov))

**Livestock Program:** Supports the raising and keeping of livestock to minimize adverse impacts on the environment, particularly on water quality and salmon habitat. This includes help developing a workable solution for handling livestock waste.

<https://kingcounty.gov/environment/wlr/sections-programs/rural-regional-services-section/agriculture-program/livestock-programs.aspx>

Contact: Rick Reinlasoder (206-477-4810 or [rick.reinlasoder@kingcounty.gov](mailto:rick.reinlasoder@kingcounty.gov))

**Farmland Preservation Program:** King County purchases development rights from agricultural landowners to permanently protect the land for future farming. It is a voluntary program.

<https://kingcounty.gov/environment/wlr/sections-programs/rural-regional-services-section/agriculture-program/farmland-preservation-program.aspx>

Contact: Ted Sullivan (206-477-4834 or [ted.sullivan@kingcounty.gov](mailto:ted.sullivan@kingcounty.gov))

**Forestry Program:** King County offers education, technical assistance, and economic incentives aimed at retaining forest land for its environmental, social, and economic benefits.

<https://kingcounty.gov/environment/wlr/sections-programs/rural-regional-services-section/forestry-program.aspx>

Contact: Bill Loeber (206-477-4755 or [bill.loeber@kingcounty.gov](mailto:bill.loeber@kingcounty.gov))

Wendy Sammarco (206-263-6916 or [wsammarco@kingcounty.gov](mailto:wsammarco@kingcounty.gov))

**Current Use Taxation:** The Public Benefit Rating System program provides a tax incentive to encourage landowners to voluntarily conserve and protect land resources, open space, and forest. In return for preserving and managing resources, the land is assessed at a value consistent with its “current use” rather than the “highest and best use.” The reduction in assessed land value is between 50% and 90% for the portion of the land participating in the program.

Contact: Bill Bernstein (206-477-4643 or [bill.bernstein@kingcounty.gov](mailto:bill.bernstein@kingcounty.gov))

Contact: Megan Kim (206-477-4788 or [megan.kim@kingcounty.gov](mailto:megan.kim@kingcounty.gov))

<https://kingcounty.gov/incentives>

**Transfer of Development Rights:** This program is a voluntary, incentive-based, and market-driven approach to preserve land and steer development growth away from rural and resource lands into King County’s Urban Area. Rural landowners realize economic return through the sale of development rights to private developers, who are able to build more compactly in designated unincorporated urban areas and partner cities.

<https://kingcounty.gov/environment/stewardship/sustainable-building/transfer-development-ights.aspx>

**Hazardous Waste Management:** Small businesses can get advice, cash incentives, safety materials, training, and access to free disposal to decrease and safely dispose of hazardous waste materials.

Information is available in multiple languages.

<https://lhwmp.org/home/BHW/sqg.aspx> | Business Waste Line 206-263-8899

**Hazardous Waste Management:** Small businesses can become EnviroStars and be recognized for their environmentally friendly practices and commitment. Free business promotion, mentoring and technical assistance.

<https://lhwmp.org/home/EnviroStars/index.aspx> | EnviroStars 206.263.1663

**Hazardous Waste Management:** Residents can get chemical-free gardening advice from Grow Smart Grow Safe, indoor pesticide recommendations, and free disposal services (including home pickup for qualifying residents) to decrease and safely dispose of hazardous waste materials.

<https://your.kingcounty.gov/solidwaste/facilities/hazwaste.asp>; <http://your.kingcounty.gov/solidwaste/naturalyrdcare/index.asp> | Household Hazards Line 206-296-4692

**Restoration Project Monitoring and Maintenance:** The Ecological Restoration and Engineering Services, Monitoring and Maintenance Program aims to find ways to make projects more cost-effective.

---

**Water & Land cont'd.**

tive and reliable through the use of comparative studies and experiments. The program tracks project outcomes and performs maintenance and modifications as needed to ensure projects meet their goals.

Contact: Laura Hartema (206-477-4708 or [laura.hartema@kingcounty.gov](mailto:laura.hartema@kingcounty.gov))

**Small Habitat Restoration Program:** Builds low-cost projects in rural and urban King County that enhance and restore streams and wetlands. Projects occur on both public and private land and are selected based on the benefit they will provide to the environment and the cost-efficiency.

Contact: Mason Bowles (206-477-4651 or [mason.bowles@kingcounty.gov](mailto:mason.bowles@kingcounty.gov))

**The King County Lake Stewardship Program:** Works with trained volunteers to study and monitor the health of many of King County's small lakes. Volunteer resident scientists are provided with sampling equipment, technical assistance, and education regarding a variety of lake-related topics and concerns.

Contact: Chris Knutson (206-477-4739 or [chris.knutson@kingcounty.gov](mailto:chris.knutson@kingcounty.gov))

**Noxious Weed Control Program:** Provides education and technical assistance to landowners and public agencies to help them find the best control options for noxious weeds on each site and to reduce the overall impact of noxious weeds throughout the county.

<https://kingcounty.gov/weeds>

Contact: Steven Burke (206-477-9333 or [Steven-J.Burke@kingcounty.gov](mailto:Steven-J.Burke@kingcounty.gov))

**Lake Weed Watcher Program:** Volunteers are trained to survey for aquatic weeds in small lakes. The goal is to watch for invasive weeds that are not currently known to occur in King County or that have a very limited distribution, but have the potential to spread and cause damage. Seasonal

<https://kingcounty.gov/services/environment/animals-and-plants/noxious-weeds/weed-watchers/lake-weed-watchers.aspx>

Contact: Ben Peterson (206-477-4724 or [ben.peterson@kingcounty.gov](mailto:ben.peterson@kingcounty.gov))

**Knotweed Control on Rivers:** Control knotweed and other invasive plants along the Cedar River, Snoqualmie River, Green River, and Soos Creek and tributaries. Ongoing, seasonal.

<https://kingcounty.gov/environment/animalsAndPlants/noxious-weeds/knotweed-control-projects.aspx>

Contact: Steven Burke (206-477-4639 or [Steven-J.Burke@kingcounty.gov](mailto:Steven-J.Burke@kingcounty.gov))

---

**PUBLIC HEALTH, SEATTLE & KING COUNTY****Community Health Services**

**Health insurance access and outreach:** Coordinate with partners on communication, outreach, and enrollment to inform residents of improved access to government-provided or subsidized health insurance as a result of federal healthcare reform.

<https://kingcounty.gov/depts/health/locations/health-insurance.aspx>

Contact: Daphne Pie (206-263-8369 or [daphne.pie@kingcounty.gov](mailto:daphne.pie@kingcounty.gov))

**ONGOING****Prevention**

**Communicable diseases, Public Health laboratory, Medical Examiner Office, and vital statistics:**

Conduct surveillance and investigation for all communicable diseases. Includes program and/or clinical services in HIV/AIDs, sexually transmitted diseases, tuberculosis, child vaccine distribution, immunization promotion, and public health laboratory services. Provides birth and death certificates and review of causes of death in King County.

<https://kingcounty.gov/depts/health/communicable-diseases.aspx>

Contact: Donna Allis (206-291-4517 or [donna.allis@kingcounty.gov](mailto:donna.allis@kingcounty.gov))

**Chronic Disease & Injury Prevention**

**Chronic disease & injury prevention, women's health, tobacco:** Chronic disease services including tobacco and obesity prevention, screening services for breast, cervical, and colon cancer, diabetes, and asthma services through community health workers, and violence and injury prevention services.

<https://kingcounty.gov/depts/health/chronic-diseases.aspx>

Contact: Mariel Torres Mehdipour (206-477-8620 or [mariel.torresmehdipour@kingcounty.gov](mailto:mariel.torresmehdipour@kingcounty.gov))

---

**Public Health cont'd.**

**Jail Health Services**

**Inmate services:** Provide necessary medical, psychiatric, and dental services to detained persons in correctional facilities in the King County correctional facilities in Kent and Seattle so inmates receive constitutionally guaranteed health services that meet community and professional standards of care.

Contact: Danotra McBride (206-263-4164 or [donatra.mcbride@kingcounty.gov](mailto:donatra.mcbride@kingcounty.gov))

**Community Health Services**

**Healthcare services:** Provide center-based and regional services which may include the Women, Infants, and Children assistance program, Family planning, primary care, maternity support services, oral health, refugee health, pharmacy, home nursing, healthcare access assistance, healthcare for the homeless, school-based health, and childcare health and other services.

<https://kingcounty.gov/depts/health/locations.aspx>

Contact: Jerry DeGriek (206-263-1330 or [jerry.degriek@kingcounty.gov](mailto:jerry.degriek@kingcounty.gov))

**Preparedness Section**

**Preparedness:** Support preparedness efforts of healthcare organizations, local governments, businesses, community organizations, and the public to respond to and recover quickly from all hazards including weather incidents, earthquakes, disease outbreaks, and acts of terrorism.

<https://kingcounty.gov/depts/health/emergency-preparedness.aspx>

Contact: Carina Elsenboss (206-263-8722 or [carina.elsenboss@kingcounty.gov](mailto:carina.elsenboss@kingcounty.gov))

**Environmental Health**

**Environmental public health services:** Permitting and inspection services for businesses and individuals, including food business, food worker, solid waste, plumbing and gas piping, drinking water, and septic systems. Promote health and well-being of all county residents with equity and social justice work, healthy community planning, climate change, local hazardous waste, lead and toxics, veterinary services and zoonotic disease programs.

<https://kingcounty.gov/depts/health/environmental-health.aspx>

Contact: Dylan Orr (206-477-3832 or [dylan.orr@kingcounty.gov](mailto:dylan.orr@kingcounty.gov))

**Emergency Medical Services**

**Assure high-quality emergency medical services:** Coordination of pre-hospital emergency services and provision of regional leadership through partnerships with cities and fire departments to assure uniformity of medical care and dispatch across jurisdictions, consistency and excellence in training, and medical quality. Focus areas include Medical Direction, EMS Training, Community Programs, Strategic Planning and Data Management, and Administration including Regional Leadership and Financial Management.

<https://kingcounty.gov/depts/health/emergency-medical-services.aspx>

Contact: Michele Plorde (206-263-8579 or [michele.plorde@kingcounty.gov](mailto:michele.plorde@kingcounty.gov))

---

**SHERIFF'S OFFICE**

The King County Sheriff's Office consists of over 1,100 commissioned and professional staff employees who provide services to unincorporated King County and our contract partners. These services include 9-1-1 dispatch, community patrol and emergency response, criminal investigations, traffic safety, transit police, search & rescue, sheriff's civil function, concealed weapons licensing, fingerprinting, records, etc.

The Sheriff is the chief executive officer and conservator of the peace of the county. The mission of the King County Sheriff's Office is to be a trusted partner in fighting crime and improving the quality of life for our residents and guests. We strive to achieve our mission by our work on the following goals: a) Develop and sustain public trust, value and support. b) Reduce crime and improve the community's sense of security. c) Improve traffic safety by reducing impaired and unsafe driving behaviors and traffic collisions. d) Recruit, hire, train and promote the best people, reflective of the community we serve, to provide high quality, professional and responsive service. e) Provide facilities, equipment and technology that support achievement of our mission. f) Prepare to respond to and resolve critical incidents and disasters.

---

**Sheriff's Office cont'd.**

Most of the services you receive are deployed out of one of the Sheriff's Office Precincts. Precinct supervisors work closely with their deputies and detectives to identify crime trends, hot-spot locations and the repeat offenders that are most damaging to your community. They then develop investigative plans to investigate and prosecute those offenders in a coordinated manner with other agencies and the prosecuting attorney's office. Similarly, areas with high numbers of traffic collisions are focused on, along with impaired and unsafe driving behaviors, to reduce the harm that results from collisions. Deputies are assigned to fairly consistent areas. This allows them to become familiar with residents, businesses, schools, and the overall community in their assigned patrol areas. They are expected to build relationships and learn the particular problems in an area or neighborhood, to include their focus on crime trends, traffic safety and quality of life issues. Bottomline, we want people to be and feel safe while at home, work, school and while traveling!

Our Precincts are referred to as Precincts #2, #3, & #4...or North, Southeast, and Southwest, respectively. Precinct #2 is in Sammamish City Hall, Precinct #3 is in the Hicks Raburn Precinct located in Maple Valley, and Precinct #4 is in downtown Burien.

On behalf of the men and women of the King County Sheriff's Office, thank you for the honor of serving you.

Mitzi Johanknecht, King County Sheriff

**Command Structure**

Pct. #2 – North Precinct Robin Fenton 206-263-9133

Pct. #3 – Southeast Precinct Major Troy Olmsted 206-477-6446

Pct. #4 – Southwest Precinct Major Bryan Howard 206-477-2200

**Other:**

Internal Investigations 206-263-2525

Communications Center 911 (Emergency)

206-296-3311 (Non-emergency)

King County Office of Emergency Management 206-296-3830

King County Road Services Hotline 206-477-8100