

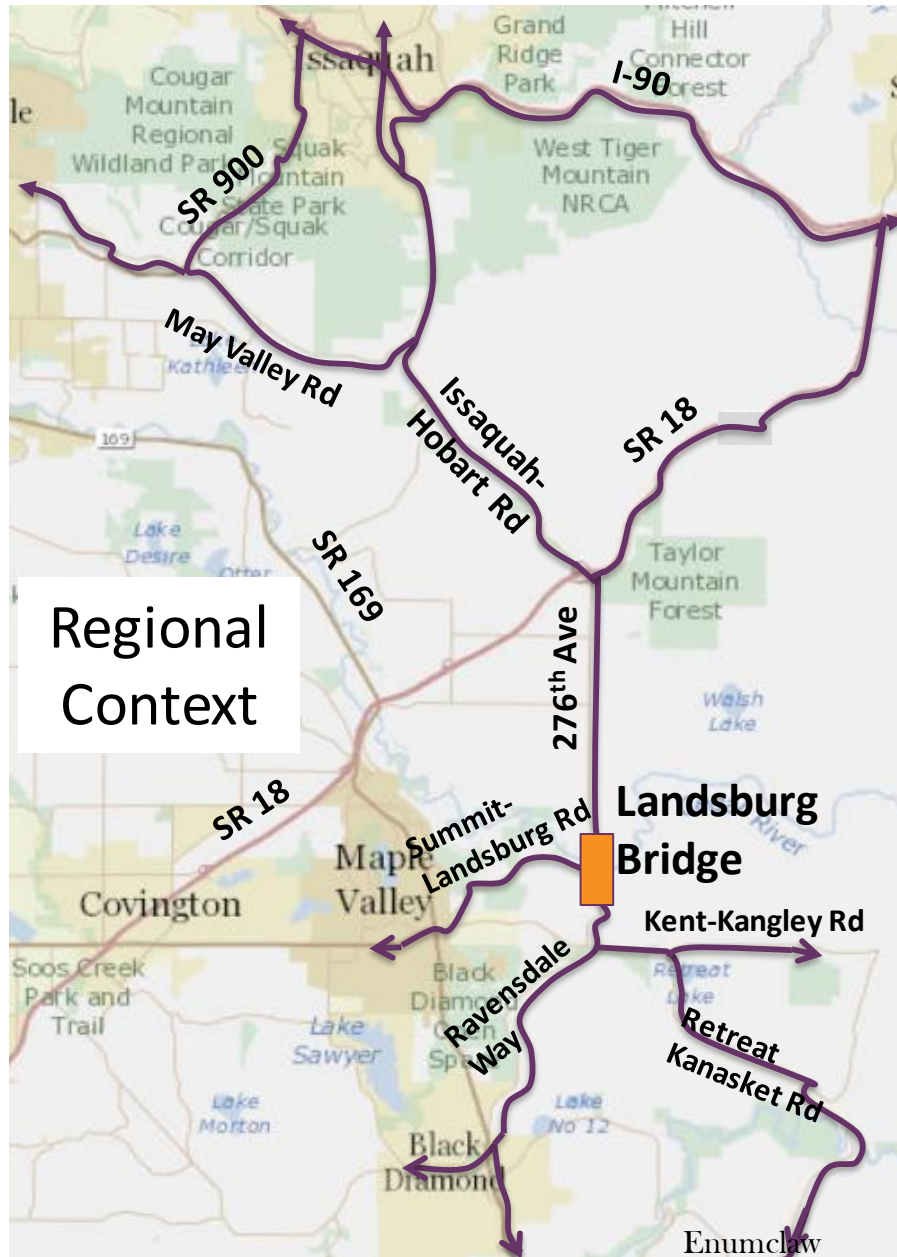
# Traffic Impacts Of Closing the Landsburg Bridge

**THIS ROAD  
WILL BE  
CLOSED**

**FRIDAY, AUG 9th TO  
THURSDAY, AUG 29th**

By Michael Birdsall



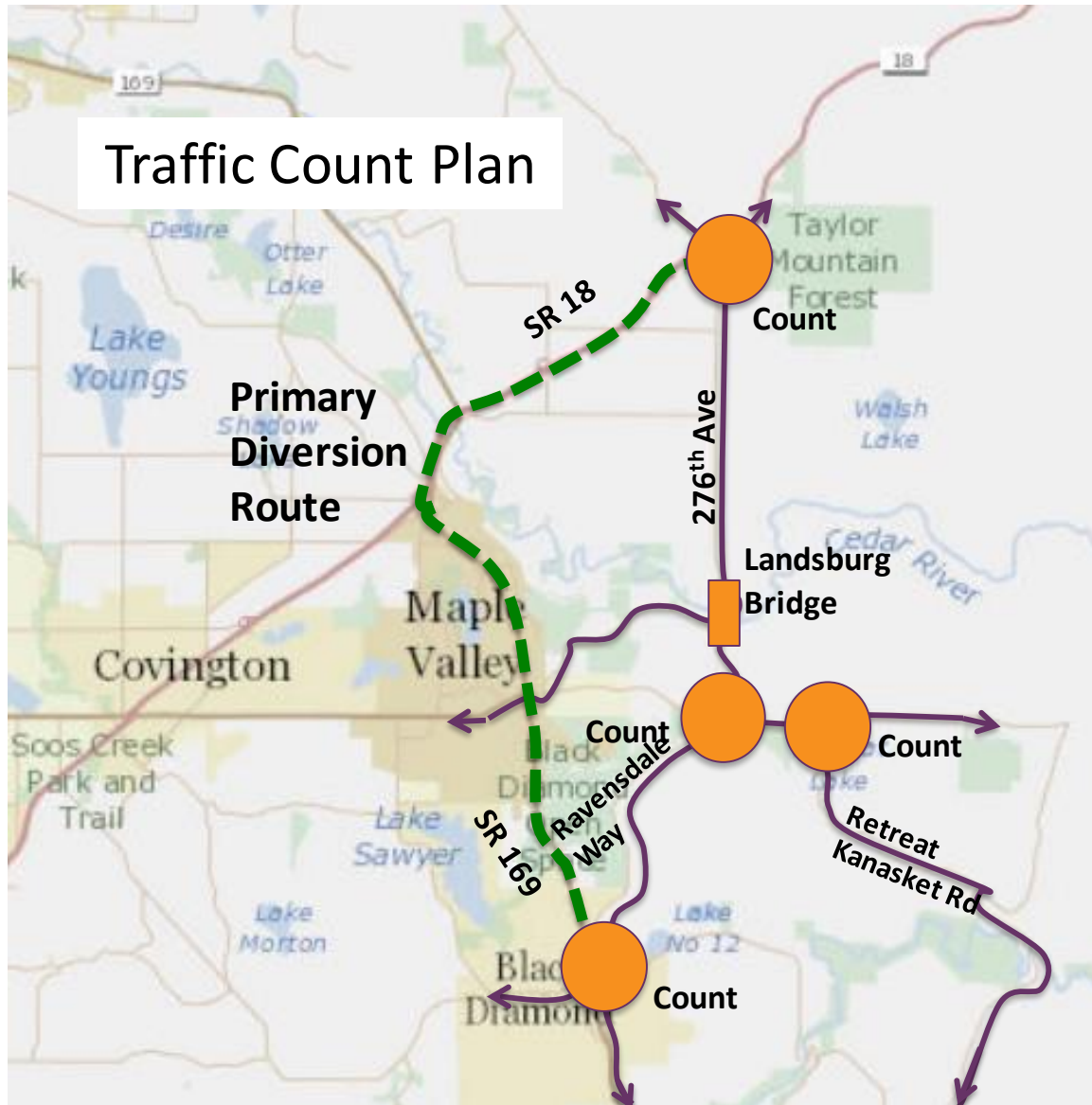


Regional  
Context

Landsburg  
Bridge

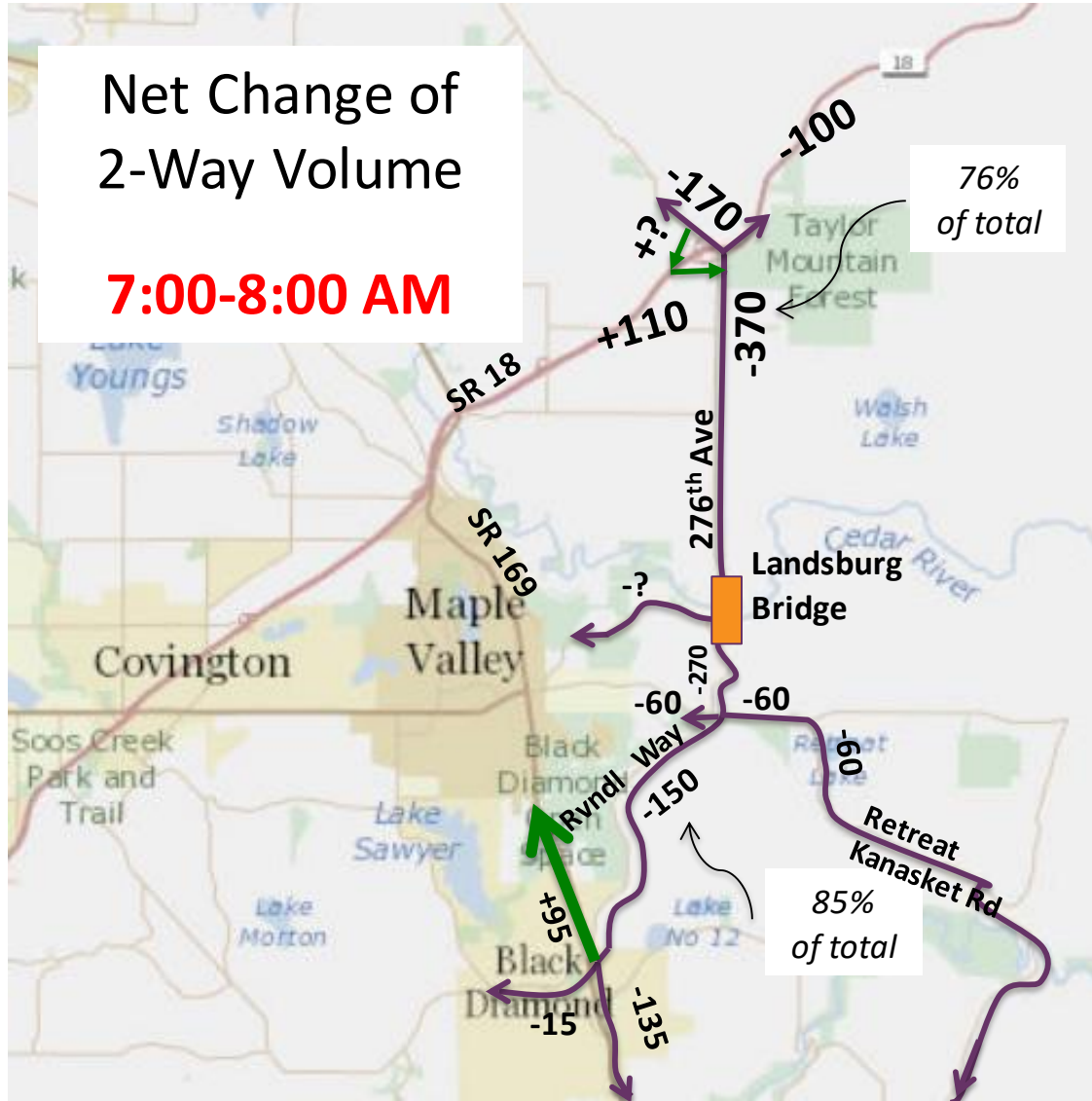


# Traffic Count Plan



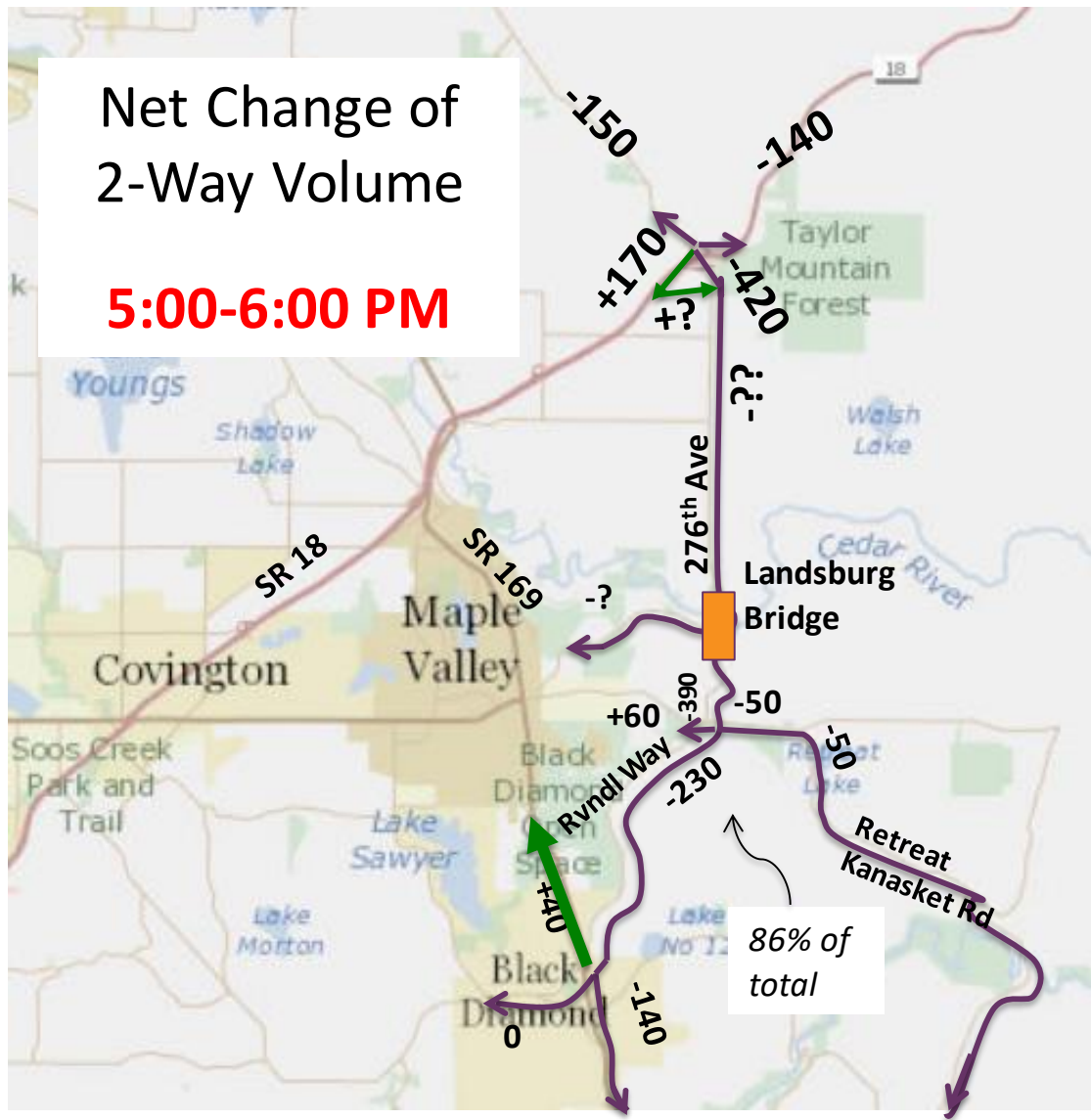
# Net Change of 2-Way Volume

**7:00-8:00 AM**



Net Change of  
2-Way Volume

**5:00-6:00 PM**



# Traffic thru Hobart\*

- 76% removed by bridge closure
- 57% from south of Kent-Kangley Rd  
(Black Diamond + Enumclaw)

\* On 276<sup>th</sup> Ave SE south of S-18, AM Pk Hr

# Traffic thru Ravensdale\*

## Ravensdale Way

- 85% removed by bridge closure

## Retreat – Kanasket Rd

- 33% removed by bridge closure

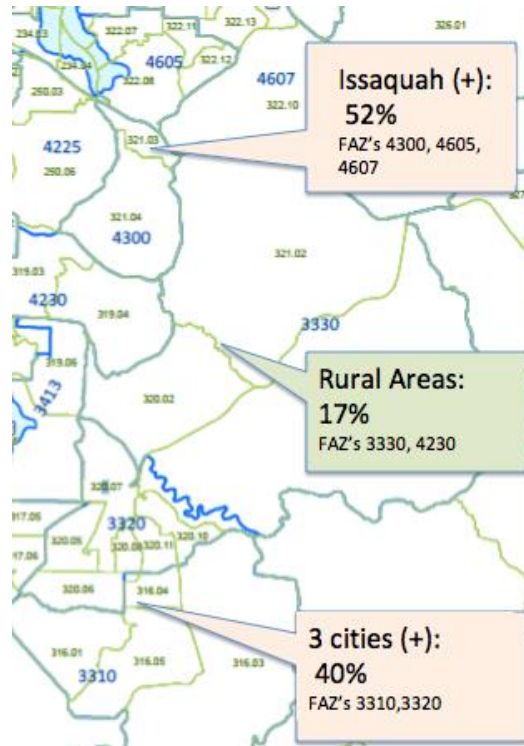
\*south of Kent-Kangley Rd

# Current Conditions

- Rural route with little traffic growth from local development
- High traffic growth in recent years
- City-to-City thru traffic dominates
- Congestion on SR169 and SR18 accounts for much of increase



## Traffic Growth Indicators 2015-2040



# Future Conditions

- PSRC 2040 growth target is >40% for 3 cities in SE King County
- Local traffic grows in kind
- Thru thru trips add more
- Black Diamond MPD's add more
- 2050 growth target adds more

# Open Questions

- Impacts on Rural Quality of Life?
- How to Mitigate Such Impacts?
- Add capacity to SR 169? SR18?
- Transit? Non-motorized?
- Climate Change: Game Changer?